



Hereford Road, London, E3

BUTLER & STAG



Nestled in the heart of Bow, this stunning top-floor one-bedroom apartment is a perfect blend of modern living and urban convenience. Situated in a secure gated development, this property comes with a long lease, making it an ideal choice for homeowners and investors alike.



Leasehold

- Top Floor Apartment
- EWS1 Compliant
- 980 Year Lease
- Close To Amenities
- Stunning Views of London
- Secure Gated Development
- Moments From Victoria Park
- One Bedroom Apartment
- Close To Transport Links

Prime Location: Located in the vibrant and trendy area of Bow, this apartment offers easy access to a range of amenities, including cafes, restaurants, shops, and parks. Excellent transport links provide quick connections to the rest of London.

Gated Development: Enjoy the peace of mind that comes with living in a secure gated community. The development is well-maintained and offers a safe environment for residents.

Living Area: A bright and airy space with large windows with a view of the city skyline, perfect for relaxing or entertaining guests.

Local Area:

Bow is a dynamic area known for its rich history and cultural diversity. Residents can enjoy the nearby green spaces such as Victoria Park and the Olympic Park, as well as a variety of local markets, boutique shops, and eateries. The area is well-connected by public transport, including the Bow Road Underground Station and various bus routes, making it easy to commute to Central London and beyond.

Conclusion:

This top-floor one-bedroom apartment in Bow is a fantastic opportunity for those seeking a stylish and secure home in one of London's most desirable areas. With its modern features and long lease, it offers both comfort and long-term value. Don't miss the chance to make this exceptional property your new home.





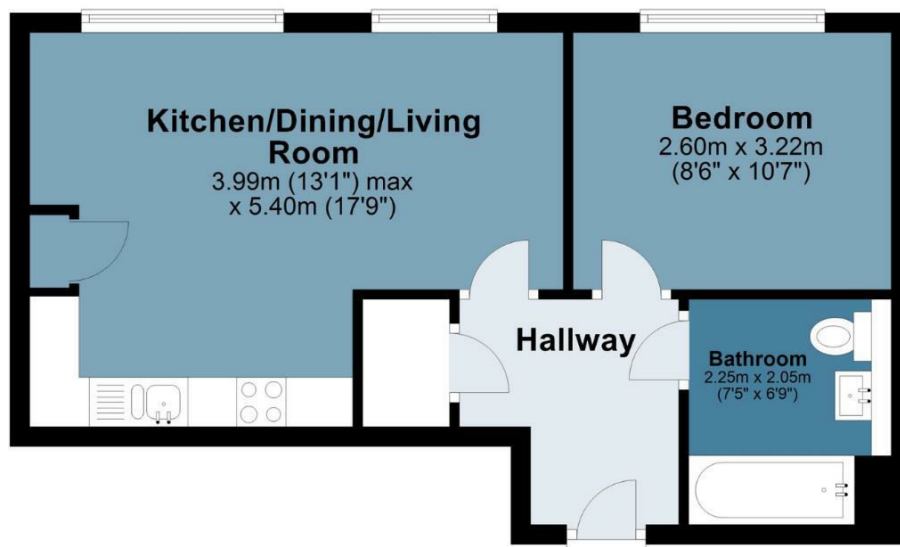
Queensgate

Approx. Gross Internal Area 38.4 sq. metres (413.1 sq. feet)

BUTLER & STAG

Fourth Floor

Approx. 38.4 sq. metres (413.1 sq. feet)



Measurements are approximate and for illustration purposes only. While we do not doubt the accuracy and completeness, we advise you conduct a careful independent assessment of the property to determine monetary value
© @modephoto.uk www.modephoto.co.uk

BUTLER & STAG

☎ 020 8102 1236

🏠 508 Roman Road, Bow, London, E3 5LU

✉ bow@butlerandstag.com

IMPORTANT NOTICE - These particulars have been prepared in good faith and they are not intended to constitute part of an offer or contract. We have not performed a structural survey on this property and the services, appliances and specific fittings have not been tested. All photographs, measurements, floor plans and distances referred to are given as a guide and should not be relied upon.

www.butlerandstag.uk